

# LIGHT CRANE SYSTEMS



Silverline Light Crane Systems are built with Light Weight Sheet Metal Material. The final Designed Profile is strong enough to carry load upto 2000 Kgs .The Structure can be designed to suit the Shop Or Standard Design can be from Silverline . These Profiles can be Bolted in position and no Welding is required on site. This section can be bend to Achieve Small Turning Radius.

These Profile can be supplied in High Quality Antirust Painting/Hot Dip Galvanized Steel. Long & Cross Travel movements are push pull type which reduces Power Consumption & avoids Complicated control panels.



# LIGHT CRANE SYSTEMS

## SAME TRACK PROFILE CAN BE USED FOR

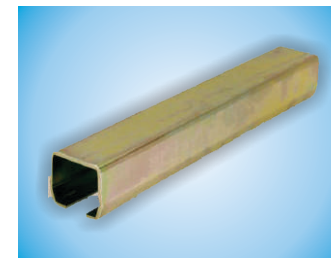
Monorail Jib Crane Heavy Duty Festoon System for high Tonnage Cranes / Heavy Cables.

## BEST USED FOR FOLLOWING APPLICATIONS

- Small Workshops or Machine Shops
- Assembly Lines
- Production Lines
- CNC Machine Shops
- Auto Repair & Maintenance Shops.

Profile No.	Dimensions			
	h (mm)	b (mm)	d (mm)	s (mm)
24.000	43,50	48,50	15,00	3,20
24.050 stainless steel	43,50	48,50	15,00	3,20
25.000	60,00	65,00	18,00	3,60
25.050 stainless steel	60,00	65,00	18,00	3,60
26.000	75,00	80,00	22,00	4,50
27.000	110,00	90,00	25,00	6,50

LIGHT CRANE TRACK



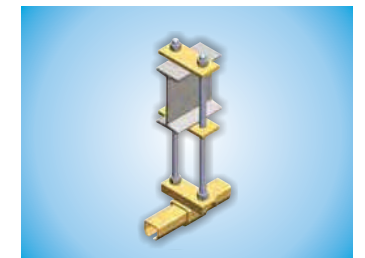
TRACK COUPLER



LIGHT CRANE END CARRIAGE



TRACK SUPPORT



## SALIENT FEATURES

- High strength profile does not require heavy building structure
- Can be installed on self standing structure
- Needs minimum head room
- Smooth silent & easy traveling trolley needs no effort to move the load
- Minimum power required as long & cross travels are manually moved
- No complicated control panel boards
- Easy modification & expandable
- Adoptable to hoist or chain block of any make
- Retractable balancers can be used in place of hoist making these system totally manually operated crane without power
- Low cost design best suitable alternate for conventional high cost or high maintenance crane.

