

W TYPE DSL SYSTEM

Shrouded Bus Bar System:

Our expertise in this domain has enabled us to offer a wide range of Shrouded Bus Bar System. Extensively used in various industrial applications, these products are manufactured strictly in accordance to international quality standards. Owing to the efficiency, robust construction and longer service life, these products are highly appreciated and demanded among the customers. 4 Bolt joints are provided as additional feature for secured joints

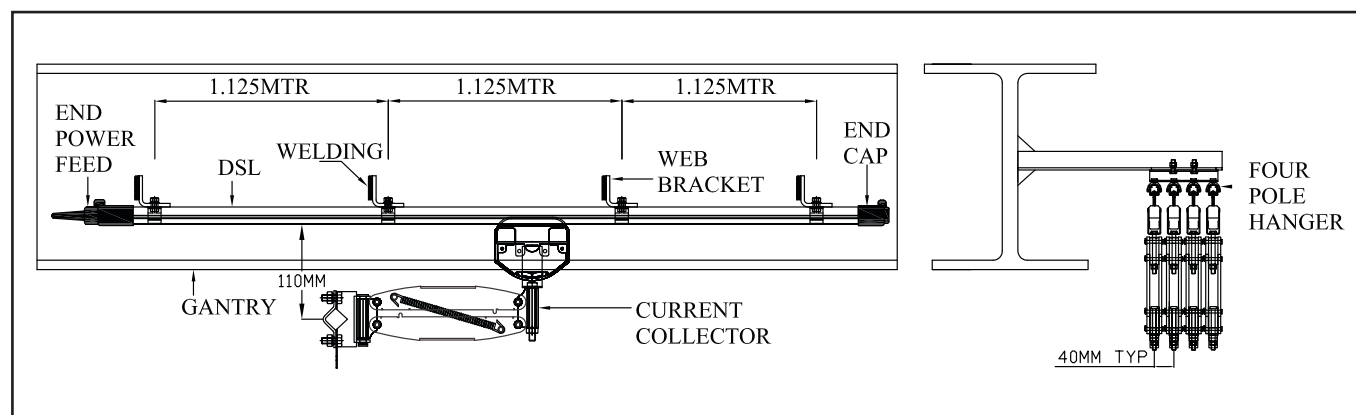
Features:

- Touch proof, no exposed live part
- Quick & easy Installation
- Insulating cover shaped to shed from water and dust
- Single Pole individual Conductors
- Suitable for Indoor / Outdoor Installation

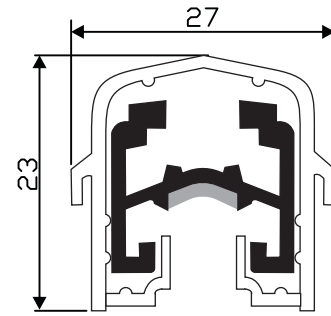
Available Range:

- Bolt Joint for Single Pole / Four Pole.
- 100 AMP to 125 AMP Galvanized Iron.
- 200 AMP to 315 AMP Aluminium/ SS
- 160, 250, 400 Amps. Copper.
- Bolt Type Conductor Bar Length 4.5 Mtr.
- Expansion joint can be provided above 80 meter length

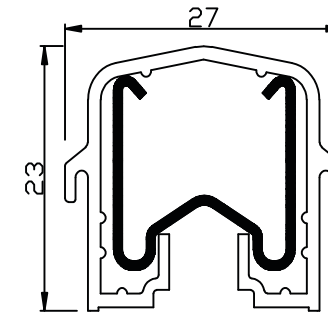
GENERAL ARRANGEMENT OF W TYPE DSL SYSTEM



W TYPE DSL SYSTEM



ALUMINIUM/SS



GALVANIZED / COPPER

Aluminium /SS	Galvanized	Copper
200 amp	60 amp	160 amp
315 amp	100 amp	250 amp
—	125 amp	400 amp



TECHNICAL DATA FOR W TYPE BOLTED JOINT CONDUCTOR SYSTEM

Conductor Bar System	Galvanised Steel			Copper			Aluminium /SS	
	Type	CRD15A08	CRD15B10	CRD15C12	CRD15D08	CRD15E10	CRD15G12	CRD 18A
"Nominal Current (A) At 100% Duty and 35° C"	60	100	125	160	250	400	200	315
DC resistance (Ω/M) At + 35° C	0.003584	0.002867	0.001933	0.000342	0.000274	0.000184	0.000301	0.000261
Impedance (Ω/M) At + 35° C	0.003604	0.002891	0.001968	0.000364	0.000300	0.000221	0.000325	0.000288
Voltage Grade [V]	600							
Support Spacing [mm]	1125							
Bar Length [mm]	4500							
Outside Dimensions [mm]	23 x 27							
Permissible Ambient Temperature	-30° C + 55° C (Standard Insulation) -30° C + 85° C (High Temperature Insulation)							